

Mary ran to tell the disciples the great news! She said, "I have seen the Lord!"

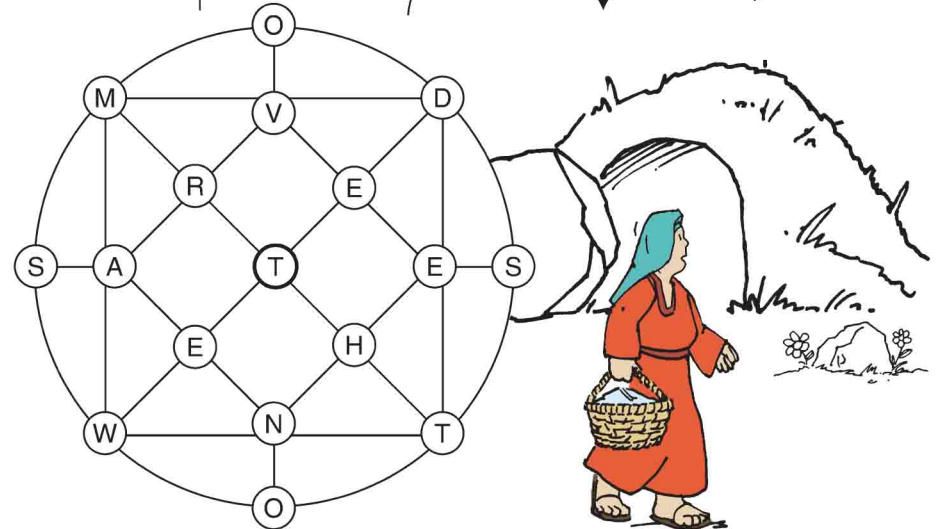
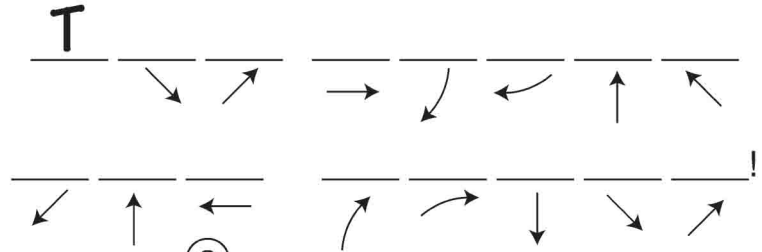
Find 15 things that are different in the second picture.



## Jesus Is Resurrected

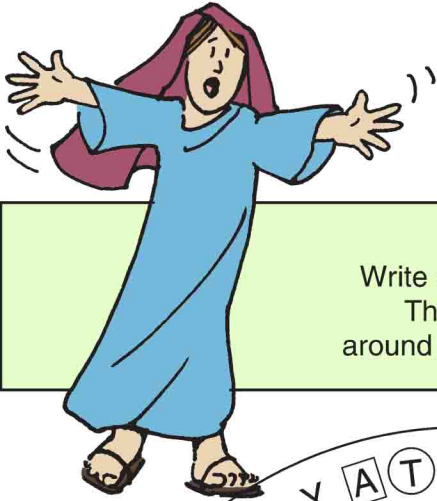
Mary Magdalene went to Jesus' tomb early on the first day of the week, before it was light. What did she find there?

Move from letter to letter around the wheel according to the arrows below the blanks to find the answer. Begin at the center.



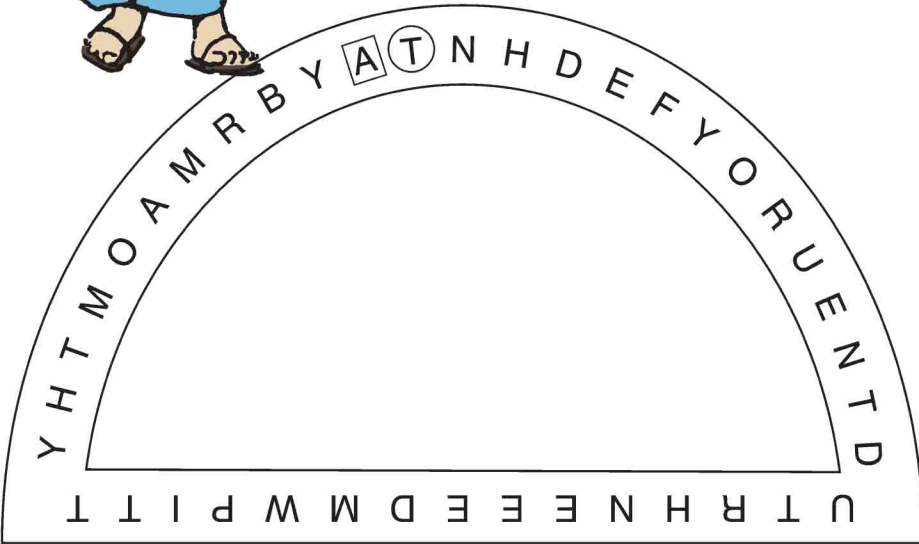
Enter your **SECRET CODE** to unlock games @ [games.childrensbulletins.com](http://games.childrensbulletins.com)

**SECRET CODE!**  
**MMHYK3**



Mary ran to tell Peter and John what she had found. What happened?

Begin at the **T**.  
Write every other letter on the lines.  
Then start with the **A** and go around again, writing every other letter.



○ \_\_\_\_\_

\_\_\_\_\_

□ \_\_\_\_\_

\_\_\_\_\_

\_\_\_\_\_!

Later, Mary stood by the tomb crying. She thought someone had taken Jesus' body. A Man stood nearby. At first she thought it was the gardener. Then He said, "Mary." She knew who it was! It was Jesus! He was alive!



Find the underlined words in the puzzle below.

They may be found → ← ↑ ↓ ↗ ↘ ↙ ↚

S	U	S	E	J	S	H	E	R
O	T	O	M	B	A	Q	E	T
M	C	O	O	H	W	N	N	H
E	R	M	O	Z	E	E	N	O
O	Y	P	A	D	A	A	A	U
N	I	T	R	R	I	B	M	G
E	N	A	B	R	Y	A	C	H
H	G	Y	D	O	B	K	S	T
A	L	I	V	E	W	E	N	K

